

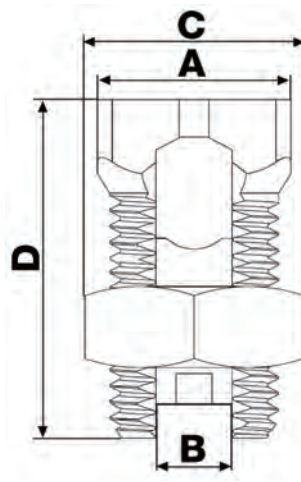
# Hex Head Split Bolts

**NEW**

**AVAILABLE**  
APRIL 2020

**UL** **CSA**  
UL486A LISTED

UL467 LISTED  
SUITABLE FOR  
DIRECT BURIAL &  
GROUNDING/BONDING



- Manufactured from High Strength High Conductivity Electrolytic Copper Alloy to Ensure Both Maximum Strength and Conductivity
- Rated for Copper Conductors Only
- Connectors are Re-Usable
- Rated 600V; 194°F (90°C)
- UL486 UL 486A-486B & CSA C22.2 No. 65-13
- UL 467 Listed for Direct Burial & Grounding/Bonding

DIMENSIONS = INCHES

CAT. NO.	AWG	MAX RUN TO MAX TAP	MIN RUN TO MIN. TAP	MAX RUN TO MIN TAP	MIN EQUAL TAP & RUN	TORQUE IN LB	A	B	C	D	BOX QTY
90301	8	8-8	16-16	8-16	16-16	80	.472	.145	.562	.854	100
90302	6	6-6	10-16	6-16	10-10	165	.492	.165	.625	.906	100
90303	4	4-4	8-16	4-16	8-8	165	.709	.268	.812	1.16	50
90304	3	2-2	4-8	2-8	4-4	275	.600	.260	.750	1.50	50
90305	2	2-2	6-14	2-14	6-6	275	.748	.326	.812	1.26	50
90306	1/0	1/0-1/0	4-14	1/0-14	4-4	385	.787	.374	.937	1.54	50
90307	2/0	2/0-2/0	2-14	2/0-14	2-2	385	.866	.421	1.06	1.69	25
90308	3/0	3/0-3/0	2-8	3/0-8	2-2	500	1.10	.531	1.25	2.09	25
90309	4/0-250	250-250	1/0-8	250-8	1/0-1/0	650	1.10	.579	1.25	2.09	25
90310	350	350-350	4/0-1/0	350-1/0	4/0-4/0	650	1.22	.700	1.50	2.36	12
90311	500	500-500	250-2/0	500-2/0	250-250	825	1.34	.815	1.75	2.84	12
90312	750	750-750	350-4/0	750-4/0	350-350	1000	1.94	1.02	2.31	3.51	1
90313	1000	1000-1000	500-4/0	1000-4/0	500-500	1100	2.19	1.17	2.56	3.90	1

**CONNECTORS**  
Split Bolt - Hex Head