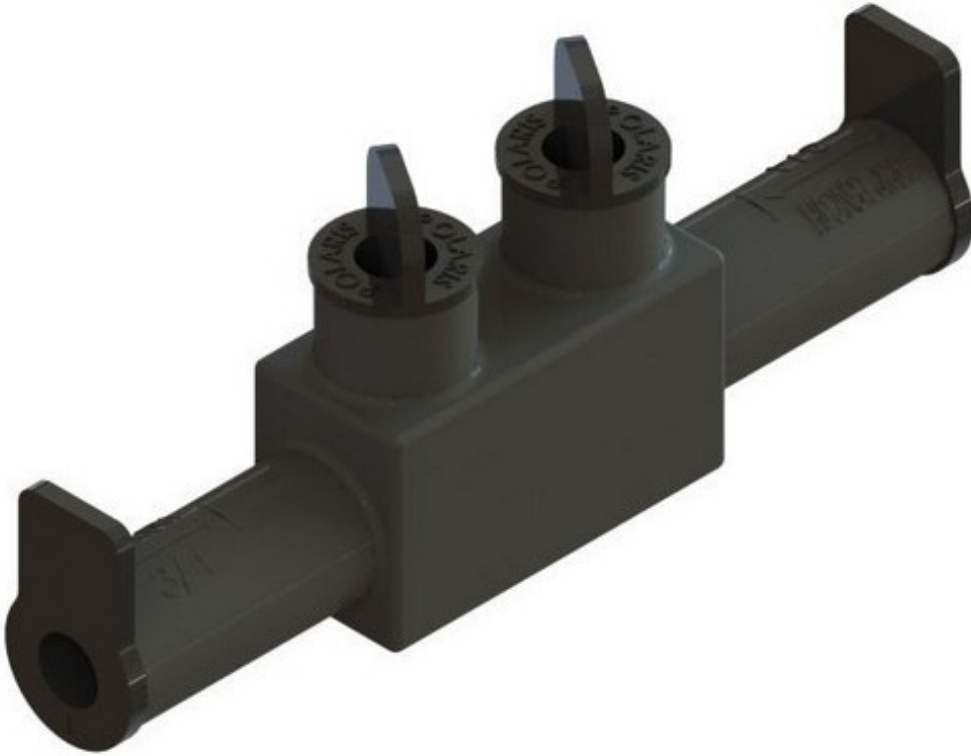




MORRIS CAT#: 98012

Submersible Insulated Splice - In-Line #14 - 2/0



Dimensions:

- Height: 2-1/8"
- Width: 7/8"
- Length: 5-1/2"
- Bolt Size: 3/16"

Features:

- Designed for use in Direct Burial & Submersible installations such as hand holes, below grade boxes, in the ground or submersed in water
- Range Taking Design Reduces Inventory
- AL9CU Dual Rated for Copper and Aluminum Conductors
- Insulated with High Dielectric Strength Tubber Compound
- Molded for Precise Fit & supplied with removable access plugs over the hex screws
- Eliminates the need for Taping, Heat Shrink, Etc.
- Abrasion and Chemical Resistant, will not support combustion
- UL Listed for Wet or Damp Locations, Direct Burial & Submersible per UL 486D
- Complies with ANSI C119.1 Specifications
- 600 Volts
- cULus Listed
- UL tested Ambient Temperature Rating Down To 0°F