



Catalog Number 12152
UPC Number 60198612152
Description Non-Insulated Parellel Splice Connector
 22-16 AWG



Features

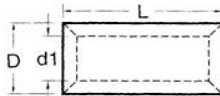
- Manufactured from high strength tubular copper alloy
- Electro-tin plated for corrosion resistance
- Wire range stamped on the surface for easy interpretation
- Funneled barrel provides excellent contact & mechanical pull-out force resistance

General

Insulation Type N/A
 Material Copper Tubular
 Finish Electro-Tin Plated
 Color N/A
 Wire Range 22-16
 Stud Size N/A

Dimension Information

L Inches (mm) 0.315
 D Inches (mm) 0.13
 D1 Inches (mm) 0.067
 T Inches (mm) 0.031



PARALLEL

Specifications

Temperature Rating 150°C
 Voltage Rating 600 V
 Flammability Rating N/A
 Amp Rating 22 AWG 9 Amps
 20 AWG 12 Amps
 18 AWG 17 Amps
 16 AWG 18 Amps

Packaging

Bag Qty 100
 Master Bag Qty 1000

Certifications

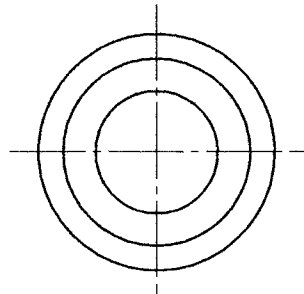
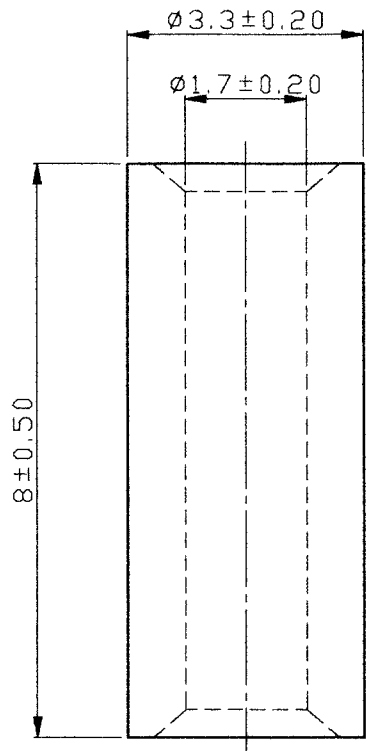
UL Yes
 cUL Yes
 RoHS Yes

Morris Products 53 Carey Road, Queensbury, NY 12804

www.morrisproducts.com



REV	DESCRIPTION	DATE
-----	-------------	------



- NOTE :
1. MAXIMUM ELECTRIC CURRENT :

A.W.G.	22	20	18	16
AMP.	9	12	17	18
 2. WIRE RANGE : 22-16 A.W.G. (0.5-1.5 mm²)
 3. SURFACE TREATMENT : TIN PLATED
 4. THICKNESS : 0.80 mm

Tolerance Unless Otherwise Specified	
0 > 6 mm ± 0.20	ANGLE
6 > 18 mm ± 0.30	0° REF ±
18 > 30 mm ± 0.40	±
30 > 75 mm ± 0.50	±

NAME	NON-INSULATED PARALLEL CONNECTORS				UNIT	mm	
PART NO.	12152	MATERIAL	COPPER TUBULAR	APPROVE			
NUMBER		SCALE	SHEET	PAGE	CHECKED		
DATE	2006/07/18	10/1	1-0	10F1	DRAWN		

Morris Products Inc.