



GWG CEMENTS & ROOF FLASHINGS

Regular Bodied 303 Series Clear Cements



- Regular-bodied clear cement for all grades & types of PVC pipe and fittings up to 4" diameter for Sch. 40 pipe & up to 2" for Sch. 80 with interference fit
- Recommended application temperature 40°F to 110°F, Sets up quickly
- Low-Voc Compliant, Meets ASTM-D2564

Cat. No.	Size	Case Qty	Wt/Case	Each	1-17 Cases	18 Cases
G30366S	1/4 Pt.	24	9			
G30356S	1/2 Pt.	24	16			
G30346S	1 Pt.	24	27			
G30336S	1 Qt.	12	26			
G30324	1 Gal.	6	52			

Medium Bodied 404 Series Clear Cements



- Medium-bodied clear cement for PVC pipe and fittings up to 6" diameter for Sch. 40 and Sch. 80
- Recommended application temperature 40°F to 110°F
- Low-Voc Compliant, Meets ASTM-D2564

Cat. No.	Size	Case Qty	Wt/Case	Each	1-17 Cases	18 Cases
G40466S	1/4 Pt.	24	9			
G40456S	1/2 Pt.	24	16			
G40446S	1 Pt.	24	27			
G40436S	1 Qt.	12	26			
G40424	1 Gal.	6	52			

Medium Bodied 403 Series Gray Cements



- Medium-bodied gray cement for PVC pipe and fittings up to 6" diameter for Sch. 40 and Sch. 80
- Recommended application temperature 40°F to 110°F
- Low-Voc Compliant, Meets ASTM-D2564

Cat. No.	Size	Case Qty	Wt/Case	Each	1-17 Cases	18 Cases
G40366S	1/4 Pt.	24	9			
G40356S	1/2 Pt.	24	16			
G40346S	1 Pt.	24	27			
G40336S	1 Qt.	12	26			
G40324	1 Gal.	6	52			

Polar-Weld 2600 Series Fast Setting All Weather Clear Cements



- Medium-bodied clear cement for PVC pipe and fittings up to 6" diameter for Sch. 40 and Sch. 80
- Formulated for fast initial set-up at temperatures down to -15°F to 110°F
- Low-Voc Compliant, Meets ASTM-D2564

Cat. No.	Size	Case Qty	Wt/Case	Each	1-17 Cases	18 Cases
G2666S	1/4 Pt.	24	9			
G2656S	1/2 Pt.	24	16			
G2646S	1 Pt.	24	27			
G2636S	1 Qt.	12	26			
G2624	1 Gal.	6	52			

Plumb-Tite 2000 Series Wet Application Blue Cements



- Medium-bodied blue colored cement for PVC pipe and fittings up to 6" dia. Sch. 40 and Sch. 80
- Very fast setting cement formulated for wet conditions and/or quick pressurization and fast installation
- Fades to clear in sunlight
- Recommended application temperature 40° to 110°F
- Also for use on ENT Conduit
- Low-Voc Compliant, Meets ASTM-D2564

Cat. No.	Size	Case Qty	Wt/Case	Each	1-17 Cases	18 Cases
G2066S	1/4 Pt.	24	9			
G2056S	1/2 Pt.	24	16			
G2046S	1 Pt.	24	27			
G2036S	1 Qt.	12	26			
G2024	1 Gal.	6	52			



GWG CEMENTS & ROOF FLASHINGS

Heavy Bodied 204 Series Clear Cements



- Heavy-bodied very high strength clear industrial cement for high pressure, large diameter and critical applications
- For PVC pipe and fittings up to 12" diameter Sch. 40 & Sch. 80
- Heavy-Duty bond
- Thick formula fills gaps in large diameter pipe and loose fitting joints
- Slow dry time in high temp. applications
- Recommended application temperature 40°F to 110°F
- Low-Voc Compliant

Cat. No.	Size	Case Qty	Wt/Case	Each	1-17 Cases	18 Cases
G20436S	1 Qt.	12	26			
G20424	1 Gal.	6	52			

Purple Primers 903 Series



- Purple-tinted aggressive primer for use on PVC pipe and fittings
- Can be used with all schedules and diameters of pipe
- Softens the pipe surface to allow a fast, secure solvent weld
- Low-Voc Compliant, Meets NSF standards where required or specified

Cat. No.	Size	Case Qty	Wt/Case	Each	1-17 Cases	18 Cases
G90366S	1/4Pt.	24	9			
G90356S	1/2 Pt.	24	14			
G90346S	1 Pt.	24	25			
G90336S	1 Qt.	12	24			
G90324	1 Gal.	6	45			

Clear Primers 9300 Series



- A clear aggressive primer for use on PVC pipe
- Can be used with all schedules and diameters of pipe
- Softens the pipe in preparation for solvent cement
- Does not apply a purple stain to the conduit
- Low-Voc Compliant, Meets ASTM F-656

Cat. No.	Size	Case Qty	Wt/Case	Each	1-17 Cases	18 Cases
G9366S	1/4Pt.	24	9			
G9356S	1/2 Pt.	24	14			
G9346S	1 Pt.	24	25			
G9336S	1 Qt.	12	24			

Purple Primer/Cleaners 8800 Series



- Purple-tinted all purpose primer/cleaner for PVC pipe and fittings
- Can be used with all schedules and diameters of pipe
- Less aggressive than clear & purple primer
- Removes surface dirt, grease and grime and softens pipe in preparation for cement
- Low-Voc Compliant

Cat. No.	Size	Case Qty	Wt/Case	Each	1-17 Cases	18 Cases
G8856S	1/2 Pt.	24	14			
G8846S	1 Pt.	24	25			
G8836S	1 Qt.	12	24			
G8824	1 Gal.	6	45			

Clear Cleaners 803 Series



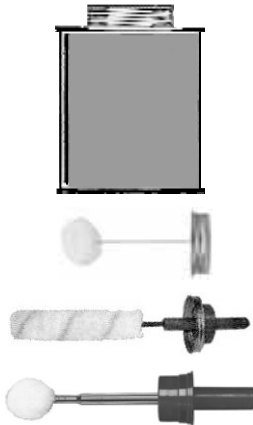
- Clear cleaner for PVC pipe and fittings
- Can be used with all schedules and diameters of pipe
- Flows freely & evaporates quickly
- Fast acting cleaner removes surface dirt, grease and grime
- Low-Voc Compliant

Cat. No.	Size	Case Qty	Wt/Case	Each	1-17 Cases	18 Cases
G80366S	1/4 Pt.	24	9			
G80356S	1/2 Pt.	24	16			
G80346S	1 Pt.	24	27			
G80336S	1 Qt.	12	26			
G80324	1 Gal.	6	52			



GWG CEMENTS & ROOF FLASHINGS

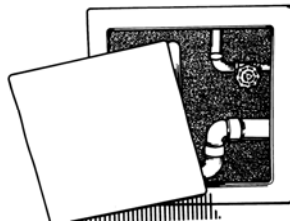
Solvent Cement and Primer Accessories



- G31305-G30901 Standard replacement cans
- G31309-G31275 Standard replacement daubers, swab applicator & roller specifically sized for cans
- G31300-G31301 Adjustable plastic daubers fit can sizes 1/2" thru quart, designed to adjust to various can dimensions and allows application of the proper amount of cement to ensure a good solvent weld

Cat. No.	Size	Case Qty	Wt/Case	Case Price
G31305	1/2 Pint Replacement Can	24	7	
G31306	Pint Replacement Can	24	7	
G31307	Quart Replacement Can	12	7	
G30901	Gallon Wide Mouth Replacement Can	6	10	
G31309	1/2 Pint Dauber	48	2	
G31310	Pint Dauber	48	2	
G31312	Quart Dauber	48	2	
G31276	12" Gallon Can Swab Applicator	12	8	
G31275	12" Gallon Can Roller Applicator	12	8	
G31300	Adjustable Plastic Dauber w/ 1/2" Ball	48	4	
G31301	Adjustable Plastic Dauber w/ 1" Ball	48	4	

Access Panels



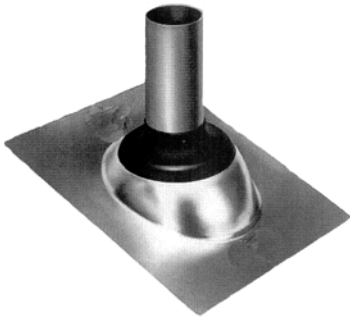
- Provides a service area for electrical, security systems, telephone, TV, computer cables, plumbing, and sprinkler system applications
- Reversible - can be flush mounted or surface mounted, no framing required
- Manufactured from high-impact ABS, White Textured surface
- UV Stabilized for outdoor use
- Can be painted, wallpapered or tiled to match any décor
- Patented clips on panel door & frame eliminates sagging or bowing of door in ceiling applications
- #34054, #34055 & #34045 have knockouts to accommodate wires, 1/4" waterlines, etc.

Cat. No.	Size	Case Qty	Wt/Case	Each	1-17 Cases	18 Cases
G34054	4" x 6"	12	4			
G34055	6" x 9"	6	5			
G34045	8" x 8"	6	12			
G34056	14" x 14"	6	12			
G34044	14" x 29"	6	15			



GWG CEMENTS & ROOF FLASHINGS

Galvanized Self-Seal Roof Flashings



- Made of rust-proof, stamped 24 gauge galvanized steel

- Slips easily over vent pipe - self-sealing to vent pipe surface, 40° pitch
- Self-sealing elastomeric collar attached to a base of heavy gage aluminum
- Collar will not crack, chip, peel or separate from aluminum
- Eliminates caulking - no sealing compound required
- Absolutely leak-proof & fits most roof sizes
- Accommodates all vent types - ie: plastic, copper, steel or cast iron

G11830 commonly used in Solar Applications

G12209 Multisize Simply remove inner ring at the indicated point on collar

Cat No.	Size	L	W	Case Qty	Wt/Case	Each	1-17 Cases	18 Cases
G11830	1/2" - 1"	9"	12.5"	12	11			
G12201	1-1/4" - 1-1/2"	12.5"	9"	12	12			
G12202	2"	12.5"	9"	12	12			
G12203	3"	14.5"	11"	12	17			
G12204	4"	15"	12"	12	23			
G12209	1-1/2" - 2" - 3"	11"	14.5"	12	23			

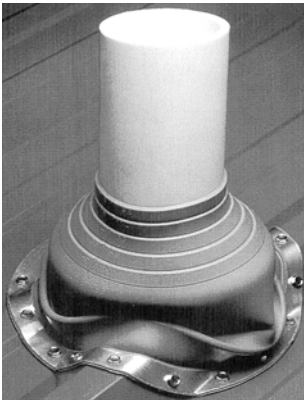
Rubber Flexible Flashings



- Rubber seizes the vent pipe with a locking grip preventing leakage entirely, 40° pitch
- One piece construction molded from military grade elastomer assures long life & all weather protection - will not crack, chip or peel; oil, ozone & sunlight (UV) resistant
- Highly adaptable product installs quickly & easily & adjusts to wide range of roof pitches, contours & surfaces
- Accommodates all vent types - ie: plastic, copper, steel or cast iron

Cat No.	Size	Case Qty	Wt/Case	Each	1-17 Cases	18 Cases
G30101	1-1/4" - 1-1/2"	12	6			
G30102	2"	12	7			
G14025	2-1/2"	12	8			
G30103	3"	12	9			
G30104	4"	12	13			

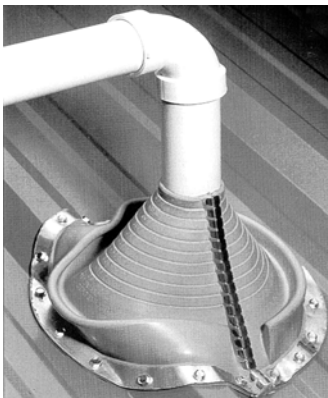
Metal Roof Flashings



- Attaches to most decks, aluminum, copper, lead, plastic, fiberglass, etc.
- Applications include plumbing, heating & air conditioning pipes & vents, electrical service entrances, etc.
- Flexible, weather resistant E.P.D.M. resists ozone & UV light
- Pleated cone adjusts to any roof pitch & allows for complete flexibility
- Effectively isolates the pipe from the building movement created by expansion, contraction & vibration
- 30°F - 250°F continuous service temperature range
- Compatible with pipes of steel, PVC, copper & sheet metal

Cat No.	Outside Diameter of Pipe to be Flashing	Base Diameter	Height	Case Qty	Wt/Case	Each	1-17 Cases	18 Cases
G14741	1/4" - 2"	4-3/4"	3"	10	2			
G14743	1/4" - 4"	7-3/4"	4"	5	4			

Retrofit Roof Flashings



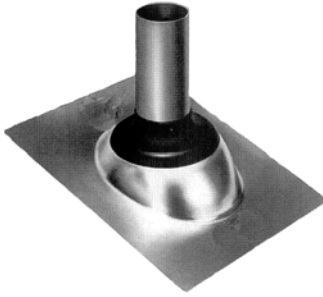
- Designed for applications where continuous pipes or obstructions prevent the use of standard flashings
- Easily installed by wrapping around existing pipe & fastening down onto roof deck
- The pliable cone & stainless steel closure can easily be trimmed to the exact diameter of pipe to be flashed
- Unique stainless steel closure effectively resists corrosion & provides a positive weatherproof seal
- Corrosion-resistant aluminum base can be easily shaped to conform to most roof profiles
- Made of flexible, weatherproof E.P.D.M. rubber
- Insulates the pipe from building movement caused by expansion, contraction, & vibration
- 30°F - 250°F continuous service temperature range
- Pipe diameter markings on the flexible cone in inches & millimeters

Cat No.	Outside Diameter of Pipe to be Flashing	Base Diameter	Case Qty	Wt/Case	Each	1-17 Cases	18 Cases
G14751	1/4" - 4"	8-3/16"	10	3			
G14752	4" - 9-1/4"	14-1/4"	5	6			



GWG CEMENTS & ROOF FLASHINGS

2 Piece Electrical Service Mast Flashings



- Self-sealing collar slides over pipe and requires no caulking for up to 40° pitch
- Collar unattaches from flashing base for Electrical Service Mast applications
- Rated 180°F continuous heat
- Collar and base are separate to allow for easier installation
- 18"x18" Rustproof Galvanized Base

Cat. No.	Size	Ctn. Qty.	Wt/Ctn	Each	1-17 Cases	18 Cases
G11536	1-1/4"	25	27			
G11549	1-1/2"	25	32			
G11552	2"	25	28			
G11565	2-1/2"	25	30			

Thermoplastic Base Self Seal Roof Flashings



- Self-sealing elastomeric collar attached to a sturdy thermoplastic base
- No caulking needed
- Absolutely leak proof
- Slips easily over pipe vent
- Self-sealing to vent pipe surface
- Self-adjusting to all roof pitches
- Base will not crack or warp
- Accommodates all vent pipe types - ie: plastic, copper, steel, cast iron, etc.

Cat. No.	Size	Case Qty	Wt/Case	Each	1-17 Cases	18 Cases
G14101	1-1/4" - 1-1/2"	12	6			
G14102	2" - 2-1/2"	12	6			
G14103	3"	12	6			
G14104	4"	12	9			

Master Boot Universal Roof Flashings



- Can be used with any type of roofing material, ie: asphalt, plastic, tile, rubber, metal, etc. (not for hot mopped or built-up roofs)
- Self-sealing stepcone boot made of premium grade E.P.D.M., which gives it maximum resistance to weathering due to ozone & UV light
- Flexible aluminum alloy rim assures a formed fit and corrosion resistance - excellent for ribbed metal roofs
- Provides a permanent seal that is unaffected by expansion/contraction, vibration, ice, snow, hailstones, etc.
- Installs in about 10 minutes
- Excellent for wall penetrations - weathertight and airtight, inside or outside
- Easily customized with sharp knife/scissors to accommodate a broad range of diameters
- Slides over vent pipe & conforms to any roof pitch

Cat. No.	Size	Case Qty	Wt/Case	Each	1-17 Cases	18 Cases
G16250	1/8" - 3/4"	12	3			
G16251	1/4" - 2"	6	2			
G16252	1-1/4" - 3"	6	3			
G16253	1/4" - 4"	6	4			

Light Cutting Oil



- Formulated for hand thread cutting machines
- Protection helps make sharp clean threads while extending the life of your dies
- Anti-mist and non-staining formula is not affected by weather

Cat. No.	Size	Case Qty	Wt/Case	Each	1-17 Cases	18 Cases
G30201	1 Qt.	12	26			
G30202	1 Gal.	6	50			

Dark Cutting Oil



- Formulated for high-speed cutting machines
- A special mixture of sulphonated and chlorinated oils provides high film strength
- Keeps machines running cooler and extends the life of your dies
- Anti-mist and non-staining formula is not affected by weather

Cat. No.	Size	Case Qty	Wt/Case	Each	1-17 Cases	18 Cases
G30204	1 Qt.	12	26			
G30205	1 Gal.	6	50			

AURORA Self-Seal SOLAR Roof Flashings



- Designed to flash around solar mounting systems
- Slips easily over Conduit - self-sealing to conduit surface
- Self-sealing elastomeric tear-out collar
- Collar will not crack, chip, peel or separate from metal base
- Eliminates caulking - no sealing compound required
- Absolutely leak-proof & fits most roof sizes
- Accommodates all conduit types - ie: PVC, Aluminum, steel

Cat No.	Size	L	W	Mat'l	Case Qty	Wt/Case	Each	1-17 Cases	18 Cases
G11830	1/2" - 1"	9"	12.5"	Galvanized	12	11			
G11831	1/2", 3/4", 1"	18"	18"	Galvanized	12	22.8			
G11833	1/2", 3/4", 1"	18"	18"	Aluminum	12	18.0			
G12801	1/2" - 1-1/2"	9.5"	12.5"	Galvanized	12	14.4			
G12802	1/2" - 1-1/2"	9.5"	12.5"	Aluminum	12	10.8			
G12803	1-1/2" - 3"	9.5"	12.5"	Galvanized	12	14.4			
G12804	1-1/2" - 3"	9.5"	12.5"	Aluminum	12	10.8			

SIDEFLASH Thermoplastic Self-Seal Wall Flashings



- Designed to seal around piping penetrations through outside walls
- Slips easily over vent pipe - self-sealing to vent pipe surface
- Self-sealing elastomeric collar attached to a durable flexible hard plastic base
- Collar will not crack, chip, peel or separate from base
- Eliminates caulking - prevents moisture intrusion - no sealing compound required
- Absolutely leak-proof & fits most wall constructions
- Seals against air penetration - reduces energy costs
- Prevents bug or vermin intrusion
- Accommodates all vent types - ie: plastic, copper, steel or cast iron

Cat No.	Size	L	W	Case Qty	Wt/Case	Each	1-17 Cases	18 Cases
G12805	1/2" - 2-1/2"	8"	8.5"	12	8.4			
G12806	3" - 6"	12"	12.5"	12	8.4			