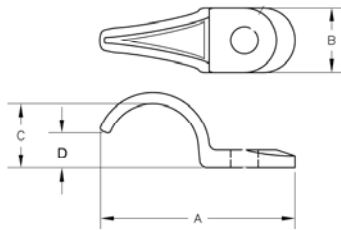


# 1 Hole Rigid Pipe Straps - Malleable Iron



- ▶ Secures Rigid & IMC Conduit
- ▶ Malleable Iron, Heavy Duty Casting
- ▶ Reinforced Rib for Extra Strength
- ▶ Snap-On Installation
- ▶ Zinc Plated



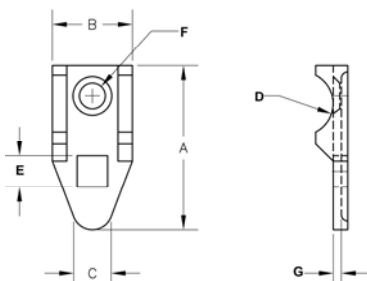
Dimensions = Inches

Cat. No.	Trade Size	Dimensions				Inner Box	Outer Box
		A	B	C	D		
19522	1/2"	2.25	.66	.94	.35	100	1000
19523	3/4"	2.26	.75	1.22	.49	50	500
19524	1"	3.06	.81	1.50	.63	25	250
19525	1-1/4"	3.69	.88	1.88	.82	20	200
19526	1-1/2"	4.00	1.00	2.06	.91	10	100
19527	2"	5.06	1.13	2.56	1.16	-	25
19528	2-1/2"	6.10	1.60	3.30	1.38	-	25
19529	3"	7.28	1.46	3.70	1.71	-	25
19531	4"	8.86	2.08	4.85	2.23	-	10
19532	5"	9.38	2.59	6.00	2.88	-	2
19533	6"	10.38	3.13	7.00	3.38	-	2

# Malleable EMT/Rigid Clamp Back Spacers



- ▶ Provides Space between conduit and mounting surface
- ▶ For use with malleable iron or aluminum straps
- ▶ Can be used with one hole straps
- ▶ Heavy Duty Casting



Dimensions = Inches

Cat. No.	Trade Size	Dimensions							Inner Box	Outer Box
		A	B	C	D	E	F	G		
14782	1/2"	2.06	1.00	.50	.43	.32	.40	.08	25	250
14783	3/4"	2.38	1.06	.50	.53	.32	.40	.08	25	250
14784	1"	2.94	1.25	.56	.67	.32	.40	.08	25	250
14785	1-1/4"	3.50	1.38	.75	.84	.32	.40	.08	10	100
14786	1-1/2"	3.81	1.44	.81	.96	.32	.40	.08	10	100
14787	2"	4.75	1.94	1.00	1.20	.32	.40	.08	5	50
14788	2-1/2"	5.75	2.44	.75	1.45	.32	.40	.08	-	25
14789	3"	6.69	2.63	.088	1.77	.32	.40	.08	-	10
14790	3-1/2"	7.13	2.88	1.08	2.02	.32	.40	.08	-	10
14791	4"	8.88	3.06	1.06	2.27	.32	.40	.08	-	10
14792	5"	10.13	3.75	.06	2.81	.32	.40	.08	-	10
14793	6"	12.19	4.00	.75	3.35	.32	.40	.08	-	10

# 1 Hole SEU Pipe Straps



- ▶ Secures SE & SEU Service Entrance Cable
- ▶ Zinc Plated Steel

Cat. No.	Cable Size	Inner Box	Outer Box
19452	(3)#8, (3)#6 or (3)#4	100	1000
19453	(3)#3 or (3)#2	100	1000
19454	(3)#1, (3)#1/0, (3)#2/0	50	500
19455	(3)#3/0, (3)#4/0	50	500

# 2 Hole SEU Pipe Straps



- ▶ Secures SE & SEU Service Entrance Cable
- ▶ Zinc Plated Steel

19456 & 19457 Available January 2015

Cat. No.	Cable Size	Inner Box	Outer Box
19456	(3)#8 or (3)#6, (3)#4	100	1000
19457	(3)#2 or (3)#3	100	1000
19458	(3)#1, (3)#1/0, or (3)#2/0	50	500
19459	(3)#3/0, (3)#4/0	25	250