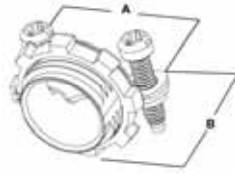


3/8" NM Connector - Zinc Die Cast

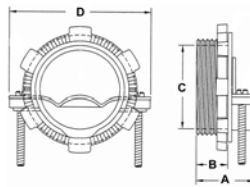


- ▶ Used to connect Non-Metallic Sheath Cable and Flexible Cord from .30" to .45" in diameter to Outlet Boxes, Enclosures, or Raceway Systems
- ▶ 3/8" size fits 1/2" knockout
- ▶ Assembled with Zinc Die Cast Locknut and Combo Screws

Dimensions = Inches

Cat. No.	Trade Size	Dimensions		Inner Box	Outer Box
		A	B		
15330	3/8"	1.18	.78	100	1000

Non-Watertight NM Round Connectors - Zinc Die Cast

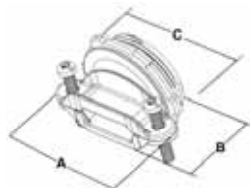


- ▶ Used with Locknut to Terminate Service Entrance Cable to Enclosure
- ▶ Assembled with Zinc Die Cast Locknut and Combo Screws
- ▶ For Type SEU and NM Cable

Dimensions = Inches

Cat. No.	Trade Size	Dimensions				Inner Box	Outer Box
		A	B	C	D		
15331	3/4"	.83	.32	.83	1.67	40	400
15332	1"	1.14	.55	1.04	1.95	20	200
15333	1-1/4"	1.24	.57	1.38	2.20	15	150
15334	1-1/2"	1.40	.57	1.61	2.60	10	100
15335	2"	1.50	.65	2.05	3.03	8	80

Non-Watertight NM Oval Connectors - Zinc Die Cast

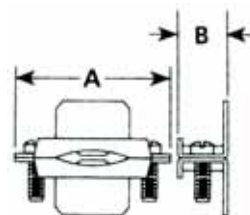
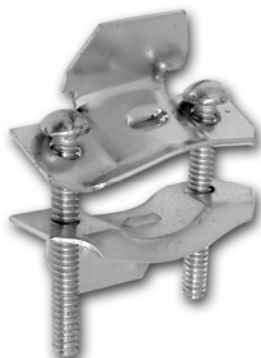


- ▶ Used with Locknut to Terminate NM Cable to Enclosure
- ▶ Assembled with Zinc Die Cast Locknut and Combo Screws
- ▶ For NM Oval Cable

Dimensions = Inches

Cat. No.	Trade Size	Dimensions			Inner Box	Outer Box
		A	B	C		
15337	1-1/4"	2.26	1.29	1.91	10	100
15338	1-1/2"	2.84	1.30	2.19	10	100
15339	2"	3.48	1.51	2.76	5	50

Tilt-in NM Connectors - Steel



- ▶ To terminate one or more Non-Metallic Sheathed Cables to a Knockout in a dry location box or enclosure
- ▶ Zinc Plated Steel
- ▶ No locknut Required

Dimensions = Inches

Cat. No.	Trade Size	Dimensions		Inner Box	Outer Box
		A	B		
19012	1/2"	1.31	.59	100	1000
19013	3/4"	1.73	.75	-	100
19014	1-1/4"	1.97	.69	-	50
19015	1-1/2"	2.52	.78	25	250