

# Nylon Insulated Blade Terminals



## MAXIMUM ELECTRIC CURRENT:

Awg	26	24	22	18	16	14	12	10
Amp	5.5	7	9	17	18	30	35	50

**MAXIMUM ELECTRIC RATING:** 221°F(105°C) 600 Volts

**INSULATION MATERIAL:** Nylon

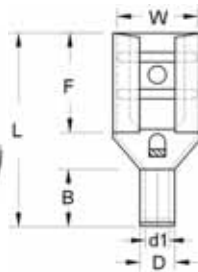
**TERMINAL MATERIAL:** Electro-Tin Plated Copper

\*Note: Part 11846 is Brazed Seam

Dimensions = Inches

Cat. No.	Color	Wire Size AWG	Tab Dim.	L	D	W	Bag Qty	Master Bag Qty
11842	Red	22-16	.118 x .030	.858	.157	.118	100	1000
11844	Blue	16-14	.118 x .031	.937	.177	.118	100	1000
11846*	Yellow	12-10	.110 x .039	.906	.252	.110	100	1000

# Non-Insulated Double Crimp Female Disconnects



## MAXIMUM ELECTRIC CURRENT:

Awg	22	20	18	16	14	12	10
Amp	3	4	7	10	15	20	24

**MAXIMUM ELECTRIC RATING:** 302°F(150°C) 600 Volts

**TERMINAL MATERIAL:** Electro-Tin Plated Brass - Brazed Seam

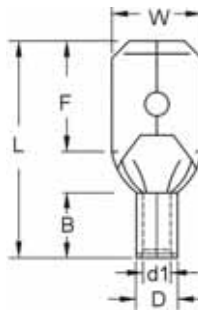
**DOUBLE CRIMP:** Extended Copper Sleeve for Multiple Crimps

**FEATURES:** Serrated Barrel

Dimensions = Inches

Cat. No.	Wire Size AWG	NEMA TAB	W	F	L	B	D	d1	Bag Qty	Master Bag Qty
10246	22-16	.020X.187	.199	.248	.543	.189	.106	.067	100	1000
10245	22-16	.032X.187	.199	.248	.543	.189	.106	.067	100	1000
10247	22-16	.032X.250	.260	.295	.598	.189	.106	.067	100	1000
10249	16-14	.020X.187	.199	.248	.543	.189	.130	.091	100	1000
10248	16-14	.032X.187	.199	.248	.543	.189	.130	.091	100	1000
10250	16-14	.032X.250	.260	.295	.598	.189	.130	.091	100	1000
10251	12-10	.032X.250	.260	.287	.642	.236	.177	.134	100	1000

# Non-Insulated Double Crimp Male Disconnects



## MAXIMUM ELECTRIC CURRENT:

Awg	22	20	18	16	14	12	10
Amp	3	4	7	10	15	20	24

**MAXIMUM ELECTRIC RATING:** 302°F(150°C) 600 Volts

**TERMINAL MATERIAL:** Electro-Tin Plated Brass - Brazed Seam

**DOUBLE CRIMP:** Extended Copper Sleeve for Multiple Crimps

**FEATURES:** Serrated Barrel

Dimensions = Inches

Cat. No.	Wire Size AWG	NEMA TAB	W	F	L	B	D	d1	Bag Qty	Master Bag Qty
10242	22-16	.032X.250	.250	.299	.646	.197	.106	.067	100	1000
10243	16-14	.032X.250	.248	.303	.646	.197	.130	.091	100	1000
10244	12-10	.032X.250	.250	.303	.669	.236	1.77	.134	100	1000

Terminals Disconnects

H16