

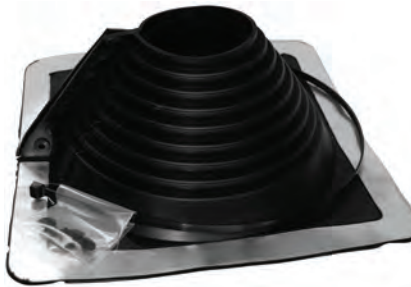
# Electrical Mast Roof Flashing



- Can be used with Corrugated Roofing material, ie: asphalt, plastic, tile, rubber, metal, etc. (not for hot mopped or built-up roofs)
- Self-Sealing Step-Cone Boot made of Premium Grade E.P.D.M. Rubber, which gives it maximum resistance to weathering due to ozone & UV light
- Flexible Aluminum Alloy Aim assures a formed fit and corrosion resistance - excellent for Ribbed Metal Roofs
- Provides a Permanent Seal that is unaffected by expansion/contraction, vibration, ice, snow, hailstones,
- Installs in about 10 minutes
- Excellent for Wall Penetrations - weathertight and airtight, inside or outside
- Easily customized with sharp knife/scissors to accommodate a broad range of diameters
- Slides over vent pipe & conforms to any roof pitch

CAT. NO.	OLD CAT. NO.	OUTSIDE DIAMETER OF PIPE TO BE FLASHED	BASE		CASE QTY	WT/ CASE
			LENGTH	WIDTH		
G16250		1/8" TO 3/4"	2-1/4"	2-1/4"	12	2
G14050	G16251	1/4" TO 2-3/4"	4-1/2"	4-1/2"	6	2
G14051	G16252	7/8" TO 4"	6"	6"	6	3
G14052	G16253	1/4" TO 5-3/4"	8"	8"	6	4

# Retrofit Roof Flashings



- Designed for Applications where Continuous Pipes or Obstructions prevent the use of standard flashings
- Easily installed by wrapping around existing pipe & fastening down onto roof deck
- The Pliable Cone & Stainless Steel Closure can easily be trimmed
- Unique Stainless Steel Closure effectively resists corrosion
- Corrosion-Resistant Aluminum Base can be easily shaped to conform to most roof profiles
- Made of Flexible, Weatherproof E.P.D.M. Rubber Cone, markings in inches & millimeters
- Insulates the pipe from building movement caused by expansion, contraction, & vibration
- -30°F to 250°F continuous service temperature range

CAT. NO.	OUTSIDE DIAMETER OF PIPE TO BE FLASHED	BASE		CASE QTY	WT/ CASE
		LENGTH	WIDTH		
G14751	1/4" TO 4"	8-3/16"	8-3/16"	10	3
G14752	4" TO 9-1/4"	14-1/4"	14-1/4"	5	6
G14753	9-1/4" TO 16-1/4"	21-1/2"	21-1/2"	5	11

# Black Jack® Roof Cement



TRM-1G

TRM-1Q

Black Jack® All-Weather Roof Cement is an asphalt based patching compound designed to repair cracks, splits, seams and holes in roofing materials. It also works great in new construction and in setting flashings, drip edges and roofing material edges.

- Use in wet or dry conditions
- Seals flashings, and other roof projections
- Fiber reinforced
- Thick trowel grade

CAT. NO.	DESCRIPTION	UOM	ORDER MULTIPLE
TRM-1Q	BLACK JACK ALL WEATHER ROOF CEMENT - 10 OZ. TUBE	EA	12
TRM-1Q	BLACK JACK ALL WEATHER ROOF CEMENT - 1 QUART	EA	6
TRM-1G	BLACK JACK ALL WEATHER ROOF CEMENT - 1 GALLON	EA	6