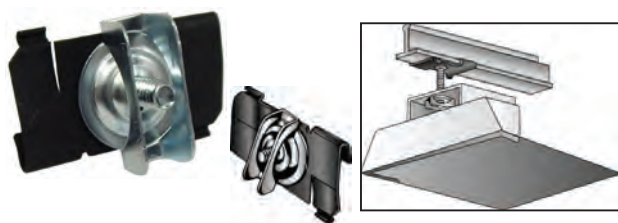




Spring Steel Twist On T-Bar Hanger

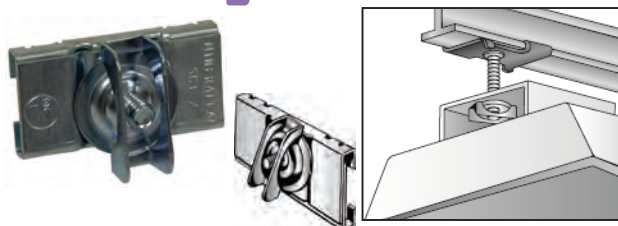


- Supports electrical fixtures to T-Bar 15/16" wide
- Assembled with 1" OD wing nut washer
- 1/4"-20 stud 5/8" long with wing nut washer

DIMENSIONS = INCHES

| CAT. NO. | STUD SIZE | T-BAR | BOX QTY |
|----------|---------------|--------|---------|
| 18022 | 1/4-20 X 5/8" | 15/16" | 100 |

T-Bar Hanger Two Piece

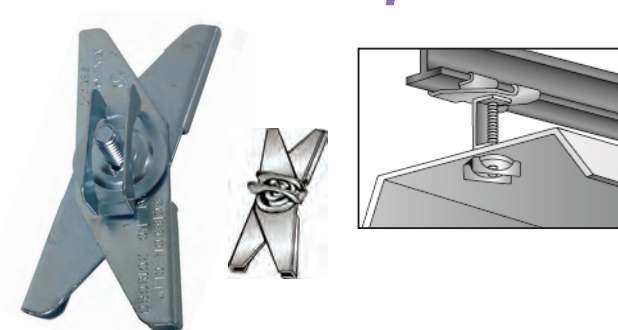


- Mounts fixtures or boxes to 1" T-Bar
- Static Load Limit of 75 lbs
- Stud is flat head, square shoulder carriage bolt which will not turn when positioned in slot
- Assembled with 1" OD wing nut washer

DIMENSIONS = INCHES

| CAT. NO. | STUD SIZE | T-BAR | BOX QTY |
|----------|---------------|-------|---------|
| 18386 | 1/4-20 X 5/8" | 1" | 100 |

T-Bar Scissor Clips Two Piece

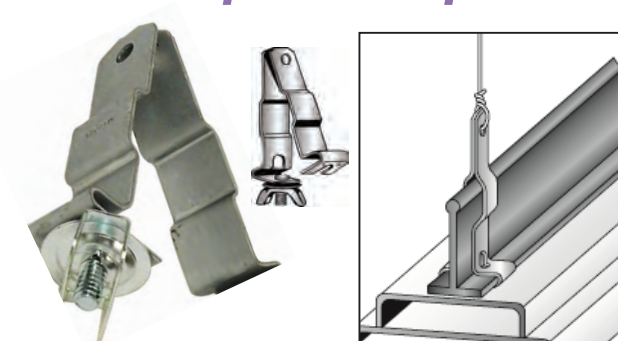


- Two-piece zinc plated clip used for mounting fixtures or boxes to 1" bar
- Static Load Limit of 100 lbs
- Includes wing nut washer

DIMENSIONS = INCHES

| CAT. NO. | STUD SIZE | T-BAR | BOX QTY |
|----------|-----------|-------|---------|
| 18387 | 5/8" | 1" | 50 |
| 18388 | 2" | 1" | 50 |

T-Bar Drop Wire Clip

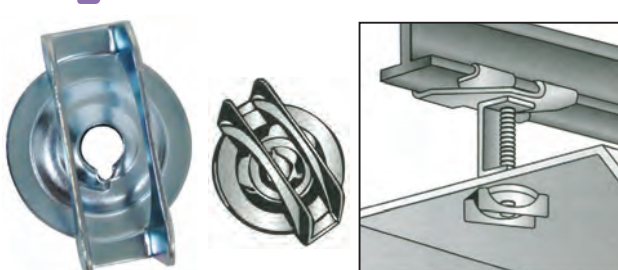


- Pre-galvanized clips support fixtures transferring the weight of fixture directly to the building structure
- Adds rigidity and support for truer alignment of the T-Grid & relieves the T-Grid from load stress
- Made from one-piece construction to accommodate various styles of T-Grid
- Includes wing nut washer

DIMENSIONS = INCHES

| CAT. NO. | STUD SIZE | T-BAR | BOX QTY |
|----------|-----------|-------|---------|
| 18385 | 5/8" | 1" | 50 |

Wing Nut Washer



- Made from zinc plated steel
- Fits 1/4"-20 Bolt

DIMENSIONS = INCHES

| CAT. NO. | DESCRIPTION | BOX QTY |
|----------|----------------------------------|---------|
| 18389 | WING NUT WASHER FOR 1/4"-20 BOLT | 100 |