

# Weatherproof Boxes

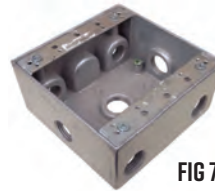
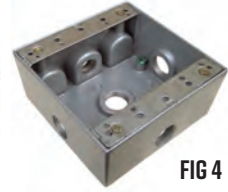
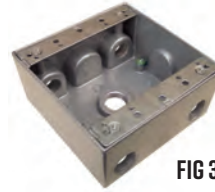
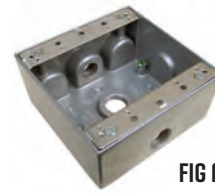


## Two Gang Deep – 30.5 Cubic Inch Capacity

Length 4-1/2" X Width 4-1/2" X Depth 2-3/16"

DIMENSIONS = INCHES

CAT. NO.	FIG	NO. OF OUTLET HOLES	OUTLET HOLE DIA.	NO. OF CLOSURE PLUGS	FINISH	BOX QTY
36210	1	3	1/2"	2	GRAY	40
36212	1	3	1/2"	2	WHITE	40
36214	1	3	1/2"	2	BRONZE	40
36220	1	3	3/4"	2	GRAY	40
36222	1	3	3/4"	2	WHITE	40
36224	1	3	3/4"	2	BRONZE	40
36230	2	4	1/2"	2	GRAY	40
36240	2	4	3/4"	2	GRAY	40
36250	3	5	1/2"	2	GRAY	40
36260	3	5	3/4"	2	GRAY	40
36270	4	5	1/2"	2	GRAY	40
36280	4	5	3/4"	2	GRAY	40
36290	5	6	1/2"	2	GRAY	40
36300	5	6	3/4"	2	GRAY	40
36310	6	7	1/2"	2	GRAY	40
36320	6	7	3/4"	2	GRAY	40
36330	7	7	1/2"	2	GRAY	40
36340	7	7	3/4"	2	GRAY	40
36350	8	9	1/2"	2	GRAY	40
36360	8	9	3/4"	2	GRAY	40



## Two Gang Deep – 37 Cubic Inch Capacity

Length 4-1/2" X Width 4-1/2" X Depth 2-5/8"

DIMENSIONS = INCHES

CAT. NO.	FIG	NO. OF OUTLET HOLES	OUTLET HOLE DIA.	NO. OF CLOSURE PLUGS	FINISH	BOX QTY
36370	9	5	1/2"	2	GRAY	20
36380	9	5	3/4"	2	GRAY	20
36390	9	5	1"	2	GRAY	20
36400	10	7	1/2"	2	GRAY	20
36410	10	7	3/4"	2	GRAY	20
36420	10	7	1"	2	GRAY	20



# Weatherproof Box Extensions & Adapter Rings

- (36520~36550) Includes Closure Plugs
- Fits All Universal Type Weatherproof Boxes
- Gasket & Mounting Screws Supplied
- Powder Coat Finish
- Seamless Die Cast Aluminum

DIMENSIONS = INCHES

CAT. NO.	FIG	NO. OF OUTLET HOLES	OUTLET HOLE DIA.	NO. OF CLOSURE PLUGS	FINISH	BOX QTY
<b>ONE GANG EXTENSION RING</b>						
9.3 CUBIC INCH CAPACITY						
LENGTH 4-9/16" X WIDTH 2-13/16" X DEPTH 1"						
36510	8	-	-	-	GRAY	50
<b>TWO GANG EXTENSION RING</b>						
16.4 CUBIC INCH CAPACITY						
LENGTH 4-9/16" X WIDTH 4-9/16" X DEPTH 1"						
36512	-9	-	-	-	GRAY	50
<b>ONE GANG FLANGED BOX EXTENSION ADAPTOR</b>						
12.8 CUBIC INCH CAPACITY						
LENGTH 5-1/4" X WIDTH 3-1/2" X DEPTH 1-1/2" X 6"						
36520	10	4	1/2"	2	GRAY	40
36530	10	4	3/4"	2	GRAY	40
36540	11	6	1/2"	2	GRAY	40
36550	11	6	3/4"	2	GRAY	40

