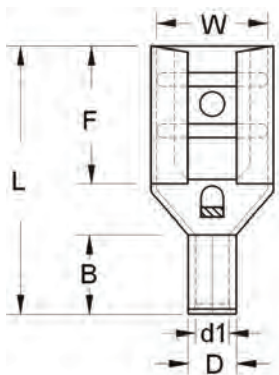


# Non-Insulated Double Crimp Female Disconnects



### MAXIMUM ELECTRIC CURRENT:

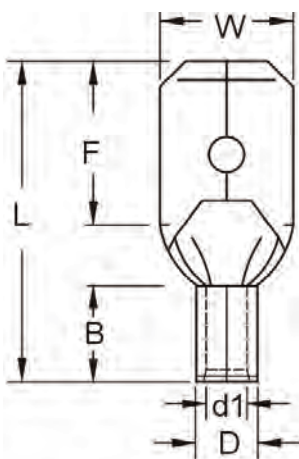
AWG	22	20	18	16	14	12	10
AMP	3	4	7	10	15	20	24

**MAXIMUM ELECTRIC RATING:** 302°F (150°C) 600 Volts  
**TERMINAL MATERIAL:** Electro-Tin Plated Brass - Brazed Seam  
**DOUBLE CRIMP:** Extended Copper Sleeve for Multiple Crimps  
**FEATURES:** Serrated Barrel

DIMENSIONS = INCHES

CAT. NO.	WIRE SIZE AWG	NEMA TAB	W	F	L	B	D	DI	BAG QTY	MASTER BAG QTY
10246	22-16	.020 X.187	.199	.248	.543	.189	.106	.067	100	1,000
10245	22-16	.032 X.187	.199	.248	.543	.189	.106	.067	100	1,000
10247	22-16	.032 X.250	.260	.295	.598	.189	.106	.067	100	1,000
10249	16-14	.020 X.187	.199	.248	.543	.189	.130	.091	100	1,000
10248	16-14	.032 X.187	.199	.248	.543	.189	.130	.091	100	1,000
10250	16-14	.032 X.250	.260	.295	.598	.189	.130	.091	100	1,000
10251	12-10	.032 X.250	.260	.287	.642	.236	.177	.134	100	1,000

# Non-Insulated Double Crimp Male Disconnects



### MAXIMUM ELECTRIC CURRENT:

AWG	22	20	18	16	14	12	10
AMP	3	4	7	10	15	20	24

**MAXIMUM ELECTRIC RATING:** 302°F (150°C) 600 Volts  
**TERMINAL MATERIAL:** Electro-Tin Plated Brass - Brazed Seam  
**DOUBLE CRIMP:** Extended Copper Sleeve for Multiple Crimps  
**FEATURES:** Serrated Barrel

DIMENSIONS = INCHES

CAT. NO.	WIRE SIZE AWG	NEMA TAB	W	F	L	B	D	DI	BAG QTY	MASTER BAG QTY
10242	22-16	.032 X.250	.250	.299	.646	.197	.106	.067	100	1,000
10243	16-14	.032 X.250	.248	.303	.646	.197	.130	.091	100	1,000
10244	12-10	.032 X.250	.250	.303	.669	.236	.177	.134	100	1,000