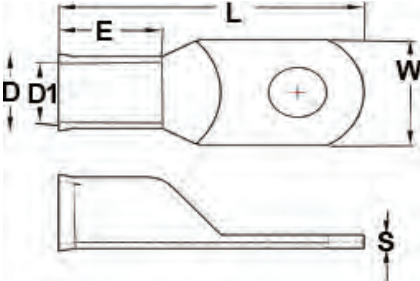


Copper Tubular Lugs



- DC Battery, Solar and AC Electrical Applications
- High Conductivity Seamless Tubular Copper
- Electro-Tin Plated
- Flared Belled Barrel
- 105°C 600V
- UL & cUL Listed



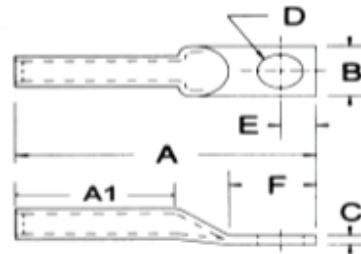
DIMENSIONS = INCHES

CAT. NO.	WIRE AWG	STUD SIZE D2	W	D1	D	L	E	S	BOX QTY
92002	6	3/8	.55	.230	.307	1.33	.354	.067	25
92004	4	3/8	.55	.287	.358	1.40	.394	.071	25
92006	2	3/8	.65	.339	.433	1.71	.630	.091	25
92008	2	1/2	.75	.339	.433	1.71	.630	.091	25
92010	1/0	3/8	.75	.417	.512	1.85	.630	.098	25
92012	1/0	1/2	.75	.417	.512	1.85	.630	.098	25
92014	2/0	3/8	.83	.461	.563	2.05	.728	.102	25
92016	2/0	1/2	.83	.461	.563	2.05	.728	.102	25

Meter Socket Lugs



- Uses 840 Common Dies - One Die Installs All Sizes
- For Meter Pan and General Applications
- Accepts Both Aluminum and Copper Conductors
- Made of High Conductivity Aluminum
- Connector Barrel is Coated with Oxide Inhibiting Compound
- Tin Plated
- Marked with Conductor Sizes and Die References
- Meets or Exceeds Class A Requirements of ANSI C119.4



DIMENSIONS = INCHES

CAT. NO.	WIRE SIZE—ALUMINUM OR COPPER WIRE SIZE				STUD SIZE D	A	A1	B	F
	CONCENTRIC	COMPRESSED	COMPACT	SOLID					
93912	2/0	2/0	3/0	3/0	3/8	3-1/4	1-3/8	1-15/16	1-5/16
93920	4/0	4/0	250	-	3/8	3-1/4	1-3/8	1-15/16	1-5/16