



Catalog Number See Table
UPC Number
Description 2 Bolt Aluminum Parallel Groove Clamp
 1/0 - 400 MCM



Features

- Manufactured from Thermally Treated Extruded Aluminum Alloy
- Steel Galvanized Set Screws
- Feed /Tap Configuration for Low Voltage Power Distribution

General

Material: Extruded Aluminum Alloy
Screw Material: Galvanized Steel
Screw Thread:
Wire Range: 1/0 - 400 MCM

Dimension Information

See Table

Specifications

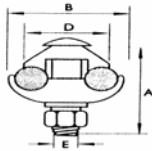
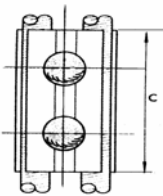
Temperature Rating
Voltage Rating 600
Flammability Rating
Amp Rating

Packaging

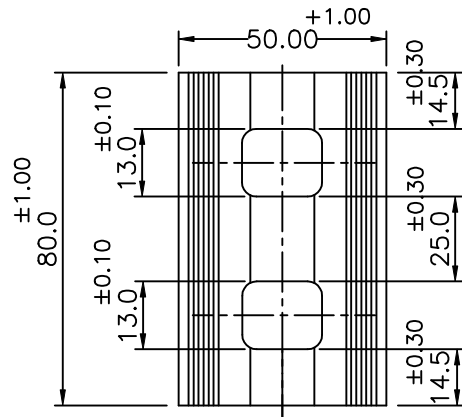
Box Qty See Table

Certifications

UL N/A
cUL N/A
RoHS N/A



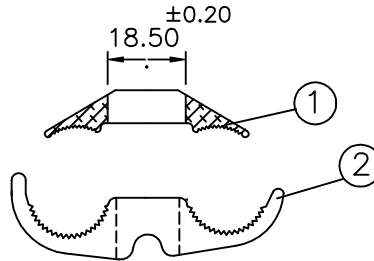
Cat No.	Figure	Main			Tap			Inches					Box Qty
		CU-AL	ACSR	Wire Diameter	Cu-AL	ACSR	Wire Diameter	A	B	C	D	E	
96022	2	1/0-4/0	1/0-4/0	.373-.563	8-1/0	6-1/0	.128-.398	1.97	1.89	2.91	1.5	0.394	25
96026	2	1/0-397.5	1/0-336.4	.373-.720	6-2/0	6-1/0	.162-.417	2.36	2.24	2.91	1.67	0.394	25
96030	2	397.5-400	397.5	.728-.740	397.5-400	397.5	.728-.740	2.36	2.56	3.15	1.97	0.472	25



Ref.: STANDARD

Note 1: Conectors are Pre Filled with anti-oxide compound.

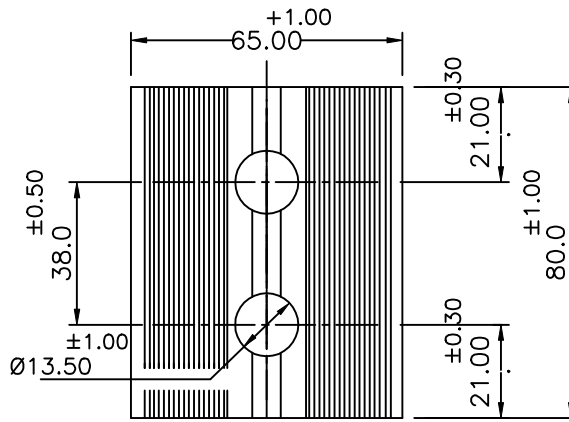
Torque: 4.7 daN.m



MARKING

96030

1/0-397,5 CA Cu CAA
50-240mm²
4.7 daN.m



Dimensions in mm

06	Plain Washer M2	02	STEEL SAE 1010/1020 Hot Galvanized		
05	Pressure Washer M 12	02	STEEL SAE 1060/1070 Hot Galvanized		
04	Hex Nut M12x1.75	02	STEEL SAE 1010/1020 Hot Galvanized		
03	Round Head Bolt M12x1.75x60.00	02	STEEL SAE 1010/1020 Hot Galvanized		
02	Female Profile	01	Aluminium alloy		
01	Male Profile	01	Aluminium alloy		
ITEM	DENOMINATION	QTY	MATERIAL	P.L.	P.B.

06		31/08/10		Morris Products Inc.	
05		17/07/97		53 Carey Rd.	
04		02/05/95		Queensbury, NY 12804	
03		18/09/92			
02		07/04/92		Date	96030
01		13/11/91		17/07/97	
No		Date			
Revisions			Appv'l		17/07/97
				01	DE: 01