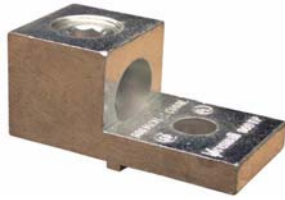




**Catalog Number** See Table  
**UPC Number**  
**Description** One Conductor One Hole  
 Aluminum Mechanical Lug  
 Turn Prevent Tang

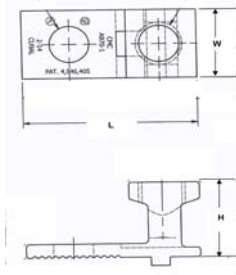


- Features**
- Manufactured from High Strength High Conductivity Aluminum Alloy
  - Electro-Tin Plated
  - CU-AL Dual rated for AL/AL, AL/CU, CU/CU Applications
  - One Conductor One Hole Configuration
  - Turn Prevent Protrusion in Base

**General**

Material: 6061-T6 Aluminum Alloy  
 Finish: Electro-Tin Plating  
 Screw Type: Hex Head  
 Wire Range: #4 - 600 MCM

**Dimension Information**  
 See Table



**Specifications**

Temperature Rating 90° C  
 Voltage Rating 600  
 Flammability Rating N/A  
 Amp Rating To Conductor

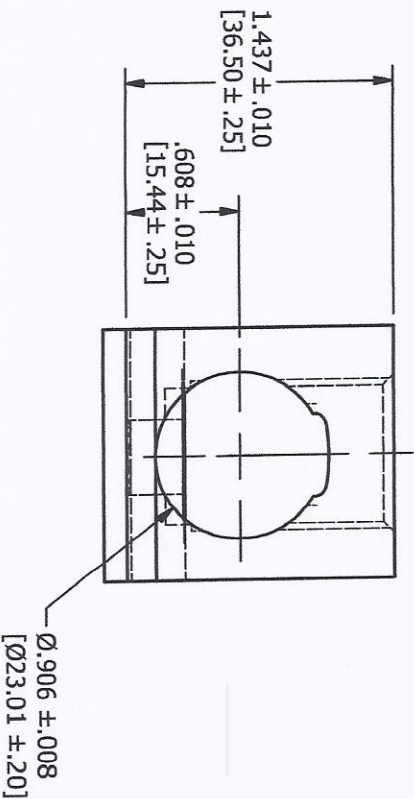
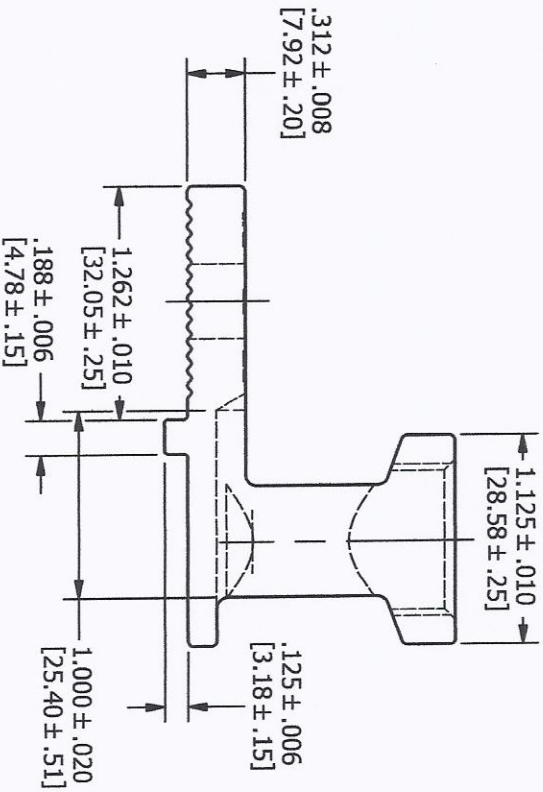
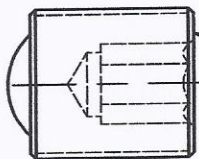
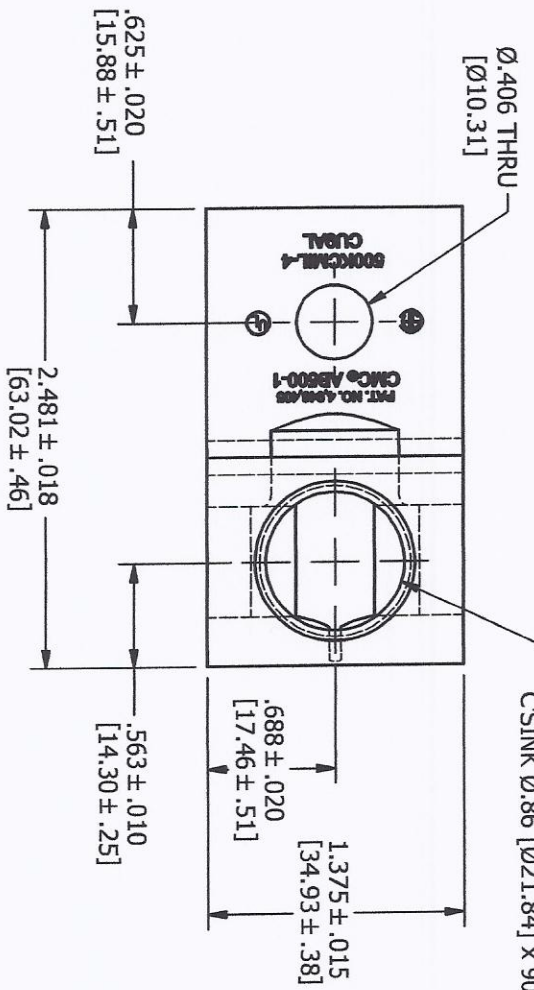
**Packaging**  
 Box Qty See Table

**Certifications**

UL UL 486B UL41968 CU9AL Dual Rated  
 CSA LR 27194  
 RoHS Yes

Cat. No.	Wire Range	Dimensions			Mtg. Hole	Turn Prevent Mtg. Hole	Box Qty	Each
		L	W	H				
91310	4-14	1.16	0.5	0.55	0.25	0.5	-	
91311	1/0-14	1.47	0.63	0.81	0.25	0.5	-	
91312	2/0 - 14	1.468	0.625	0.781	0.256	0.406	50	
91314	300MCM - 6	2	0.984	1.125	0.437	0.492	24	
91316	350MCM - 6	2.25	1.125	1.25	0.344	0.406	20	
91317	500MCM - 2	2.5	1.375	1.812	0.375	0.875	6	
91318	600MCM - 2	3.125	1.5	1.562	0.531	0.625	6	

TAP 13/16-16 UN - 2B x 1.09 [27.69] DP. MIN.  
 DRILL 1.230 [31.24] DP.  
 CSINK Ø.86 [Ø21.84] x 90°



PATENT NO. 4,946,405

FINISH: TIN PLATE CMS-02

ASM. NO. C12494038  
 PART NO. C12210038  
 BLANK NO. C12021038  
 QUOTE NO.

K	ADDED CSINK TO TAP: 2.481 ± .018 WAS ± .016 AND 1.437 ± .010 WAS ± .015	13548	11/3/10	ASJ	UNLESS OTHERWISE SPECIFIED .00 ± .015	DRAWN BY: MDC 3/22/1990	NAME OF PART: LUG ASSEMBLY	CAT. NO.: 91317
J	.625 ± .020 WAS ± .015 AND .688 ± .020 WAS ± .010	11600	8/1/08	JKO	.000 ± .005 ANGLES = ± 1/2° [X] = DIMENSION IN MILLIMETERS	CHECKED BY: BHS 2/18/2011	MATERIAL: C12601040 6061-T6 ALUMINUM	A
I	1.09 DP. MIN. WAS 1.06 DP. AND ADDED DRILL 1.230 DP.	11588	7/24/08	JKO		CROSS REFERENCE # -	SCALE: FULL	MORRIS
H	REDRAWN IN INVENTOR - NO CHANGES		11/9/07	JKO				
REV.	DESCRIPTION	ECN	DATE	INT.				