



Catalog Number 90580
UPC Number 60198690580
Description Copper Lay-In Grounding Connector



Features

- Manufactured from High Strength High Conductivity Copper Alloy
- Electro-Tin Plated
- Steel Set Screw
- Open Face Lay-In Design
- Dual Rated for Copper & Aluminum Conductors
- Equipment, Ground Grid, Conduit Ground, Solar

General

Material: Pure Electrolytic Copper
Finish: Electro-Tin Plated
Screw Type: Steel
Screw Size: .41"
Wire Range: #6 Awg - 250 MCM

Dimension Information

Length: 2.20"
Height: 1.79"
Width: .800"

Specifications

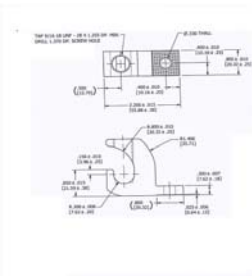
Temperature Rating
Voltage Rating 600
Flammability Rating
Amp Rating

Packaging

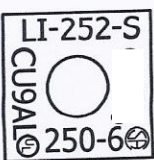
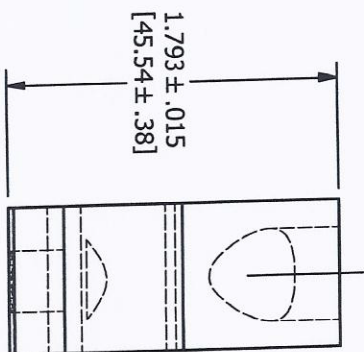
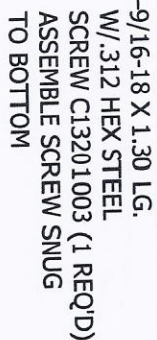
Box Qty 25

Certifications

UL 486B
CSA Yes
RoHS N/A

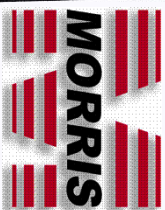



C00494028
C00210028
C00021028



MARKING

FINISH: TIN PLATE CMS-02



						UNLESS OTHERWISE SPECIFIED .00 = ± .015 .000 = ± .005 ANGLES = ± 1/2° [X] = DIMENSION IN MILLIMETERS	DRAWN BY: AML 2/18/2008	NAME OF PART: LAY IN LUG	CAT. NO.: 90580
							SHEET NO.: 1 OF 1	MATERIAL: C00601010 6061-T6 ALUMINUM	SCALE: 1X
Q	.300±.008 WAS .010, 1.406 WAS 1.406±.010, .025±.006 WAS .010	12916	3/5/10	AML					
P	RE-DREW IN INVENTOR NO CHANGE		2/18/08	AML					
REV.	DESCRIPTION	ECN	DATE	INIT.			CROSS REFERENCE # -		A