



Catalog Number	70130
UPC Number	60198670130
Description	Toggle Switch DPDT ON-ON



Features

- Heavy Duty
- DPDT
- ON-ON
- 6 Screw Terminals

General

Material:	Nickel Plated Zinc HD Non-Metallic Housing 6 Copper Screw Terminals
------------------	---

Dimension Information

See Submittal Dwg

Specifications

Temperature Rating:	N/A
Voltage Rating:	125/277 VAC
Flammability Rating:	N/A
Amperage Rating:	20 AMP, 125VAC 10 AMP, 277VAC
Motor Load:	1-1/2 HP, 125/250VAC
InsulationResistance:	500V DC 100 mohm 1 Minute
Contact Resistant:	50 mohm Max
Dialectric Strength:	1500 V AC 1 Minute

Packaging

Bag Qty	10
---------	----

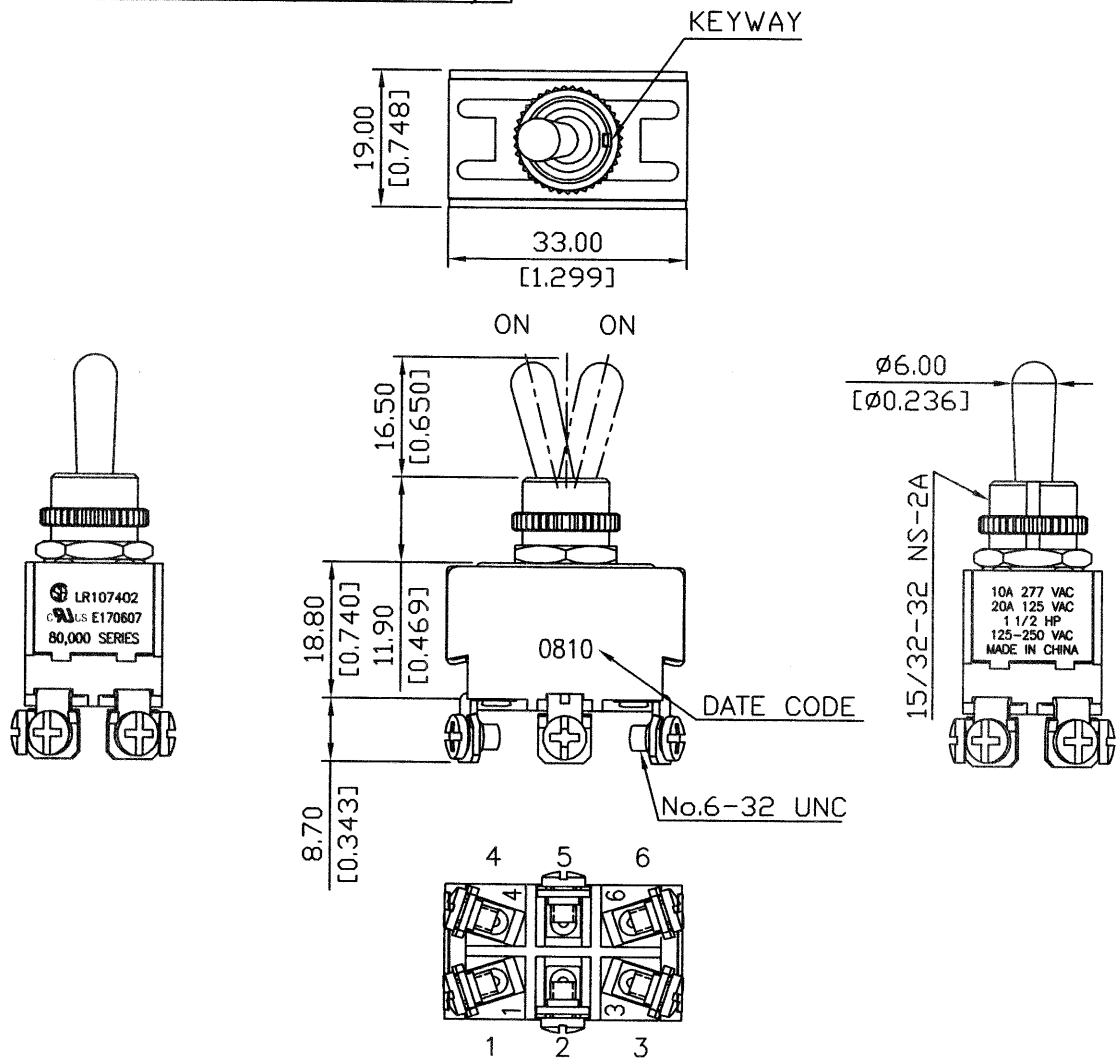
Certifications

UL	Yes
CSA	Yes
ROHS	

Rating	20A 125V, 10A 277V AC 1 1/2HP 125-250V AC	Mounting Hole	Circuit Diagram
Contact Resistance	50m ohm Max.		
Insulation Resistance	DC 500V 100M ohm Min.		
Dielectric Strength	AC 1500V 1 minute		
Switch Function	6P DPDT ON-ON		
Operation Force	1200gf±300gf		

Part	Unit	Mat'l	Status
Toggle	1	Zinc, nickel plated	
Bushing	1	Zinc, nickel plated	
Hex nut	1	Zinc, nickel plated	Assy
Knurl nut	1	Zinc, nickel plated	Assy

Packing: 1 pce/zipper bag + Morris label
10 pcs/polybag, heat sealed + Morris label
500 pcs/carton



									△
									△
Date	Name	Description							NO
Drawn	Checked	Approved		Morris Products	Model Name	TOGGLE SWITCH			
				Queensbury NY	Model No.				REV.
08/09/'10		08/09/'10	Morris P/N	70130					0