



<b>Catalog Number</b>	70100
<b>UPC Number</b>	60198670100
<b>Description</b>	Toggle Switch DPST ON-OFF



**Features**

- Heavy Duty
- DPST
- ON-OFF
- 4 Screw Terminals

**General**

<b>Material:</b>	Nickel Plated Zinc HD Non-Metallic Housing 4 Copper Screw Terminals
------------------	---

**Dimension Information**

See Submittal Dwg

**Specifications**

Temperature Rating:	N/A
Voltage Rating:	125/277 VAC
Flammability Rating:	N/A
Amperage Rating:	20 AMP, 125VAC 10 AMP, 277VAC
Motor Load:	1-1/2 HP, 125/250VAC
InsulationResistance:	500V DC 100 mohm 1 Minute
Contact Resistant:	50 mohm Max
Dialectric Strength:	1500 V AC 1 Minute

**Packaging**

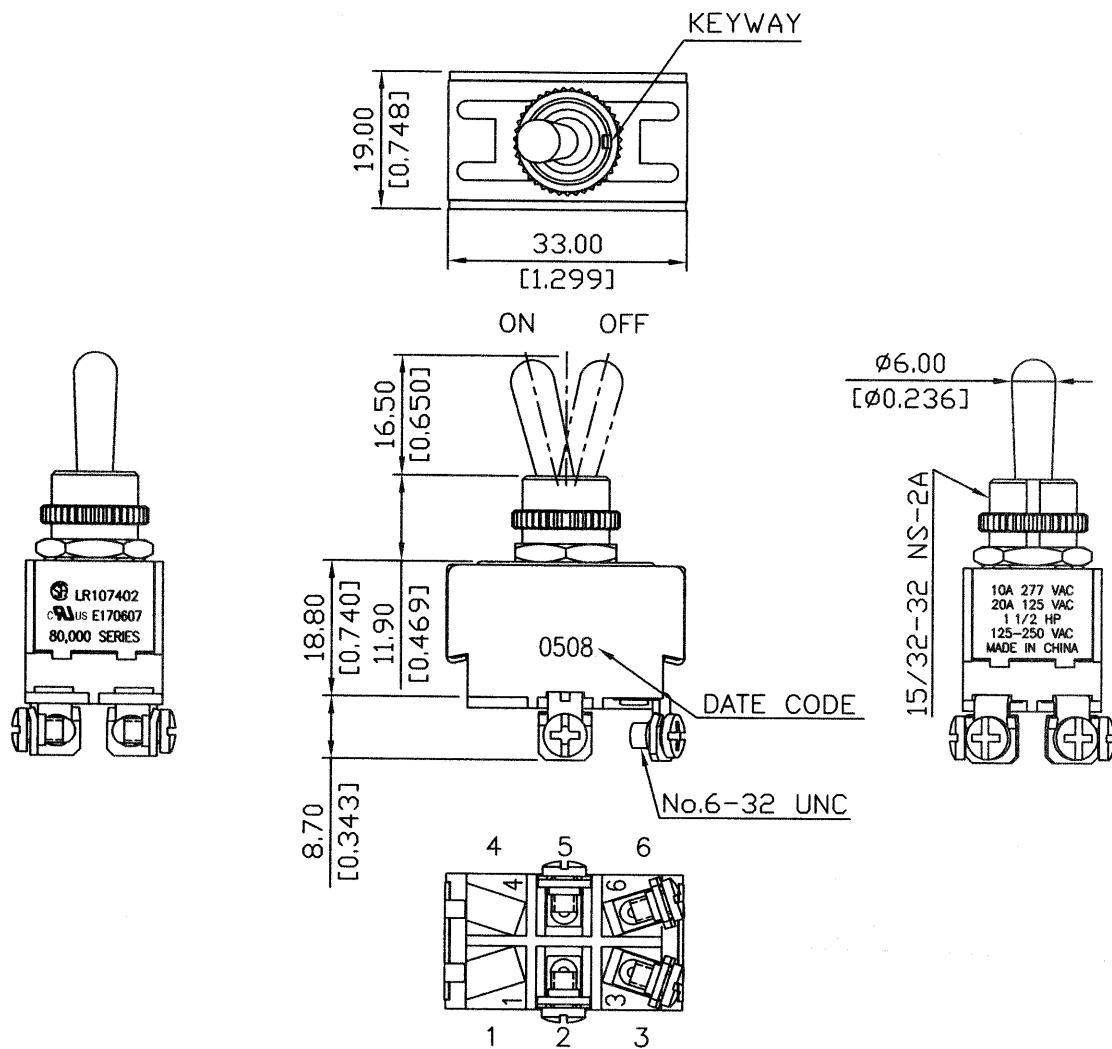
Bag Qty	10
---------	----

**Certifications**

UL	Yes
CSA	Yes
ROHS	

Rating	20A 125V, 10A 277V AC 1 1/2HP 125-250V AC	Mounting Hole	Circuit Diagram
Contact Resistance	50m ohm Max.		
Insulation Resistance	DC 500V 100M ohm Min.		
Dielectric Strength	AC 1500V 1 minute		
Switch Function	4P DPST ON-OFF		
Operation Force	1200gf±300gf		

Part	Unit	Mat'l	Status
Toggle	1	Zinc, nickel plated	Assy
Bushing	1	Zinc, nickel plated	Assy
Hex nut	1	Zinc, nickel plated	Assy
Kunrl nut	1	Zinc, nickel plated	Assy



Date	Name	Description	REV.	0	NO
Drawn	Checked	Approved			
05/08/'08	05/08/'08	05/09/'08	Morris P/N	70100	Unit mm (inch)
			Morris Products	Model Name	TOGGLE SWITCH
			Queensbury NY	Model No.	